

SQUARE FOOTAGE SUMMARY:

OFFICE:	11,747 SQFT
WAREHOUSE:	9,225 SQFT
TOTAL:	20,972 SQFT

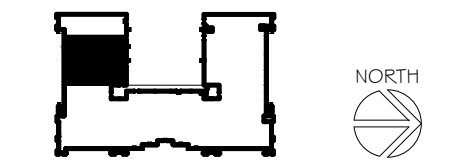
STAFF RATIO:

OFFICES:	24
WORK STATIONS:	39
TOTAL STAFF:	63



NOTE: EXISTING CONDITIONS ASSUMED FROM DIGITAL DATA PROVIDED TO THE ARCHITECT. SUBJECT TO CHANGE BASED ON AS-BUILT VERIFICATION.

SUITE B LEASE PLAN  
DATE: 06.19.07



**SUNPORT CENTER**  
ORLANDO, FLORIDA

SCALE: 1/16" = 1'-0"  
LP-2