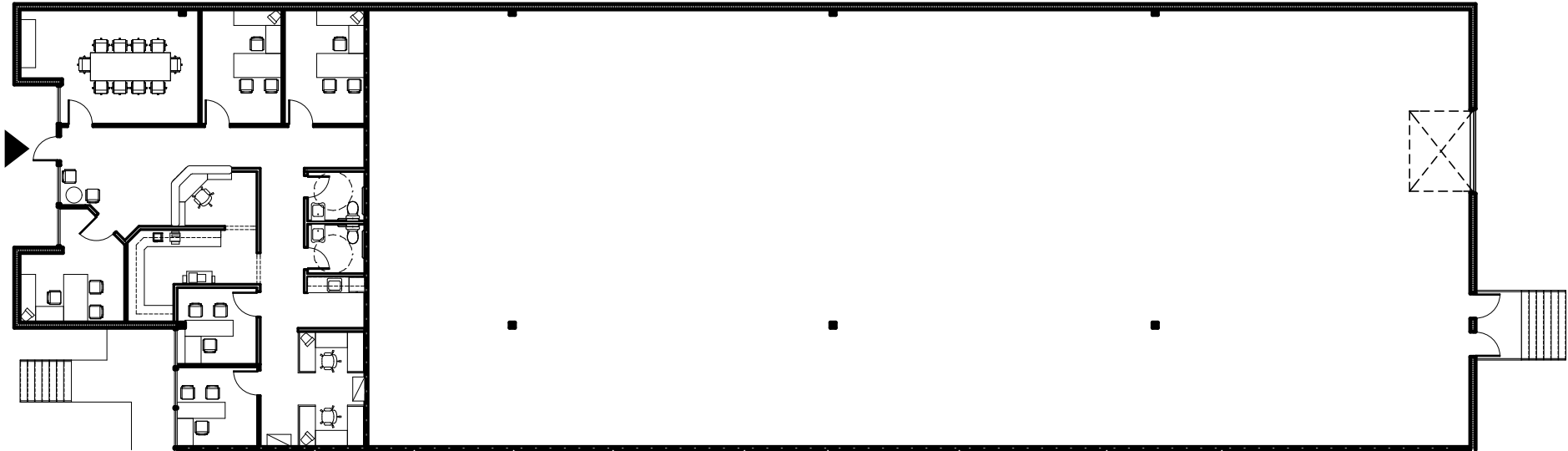


SQUARE FOOTAGE SUMMARY:

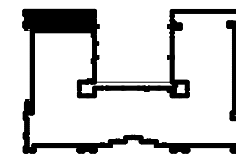
OFFICE:	1,957 SQFT
WAREHOUSE:	7,551 SQFT
TOTAL:	9,508 SQFT

STAFF RATIO:

OFFICES:	5
WORK STATIONS:	3
TOTAL STAFF:	8



NOTE: EXISTING CONDITIONS ASSUMED FROM DIGITAL DATA PROVIDED TO THE ARCHITECT. SUBJECT TO CHANGE BASED ON AS-BUILT VERIFICATION.



SUNPORT CENTER

ORLANDO, FLORIDA

SUITE A LEASE PLAN

DATE: 06.19.07

SCALE: 1" = 20'-0"

LP-1